

Roof Report

Prepared by Roofr

3470 South Barberry Place, Chandler, AZ 85248

2176 sqft

8 facets

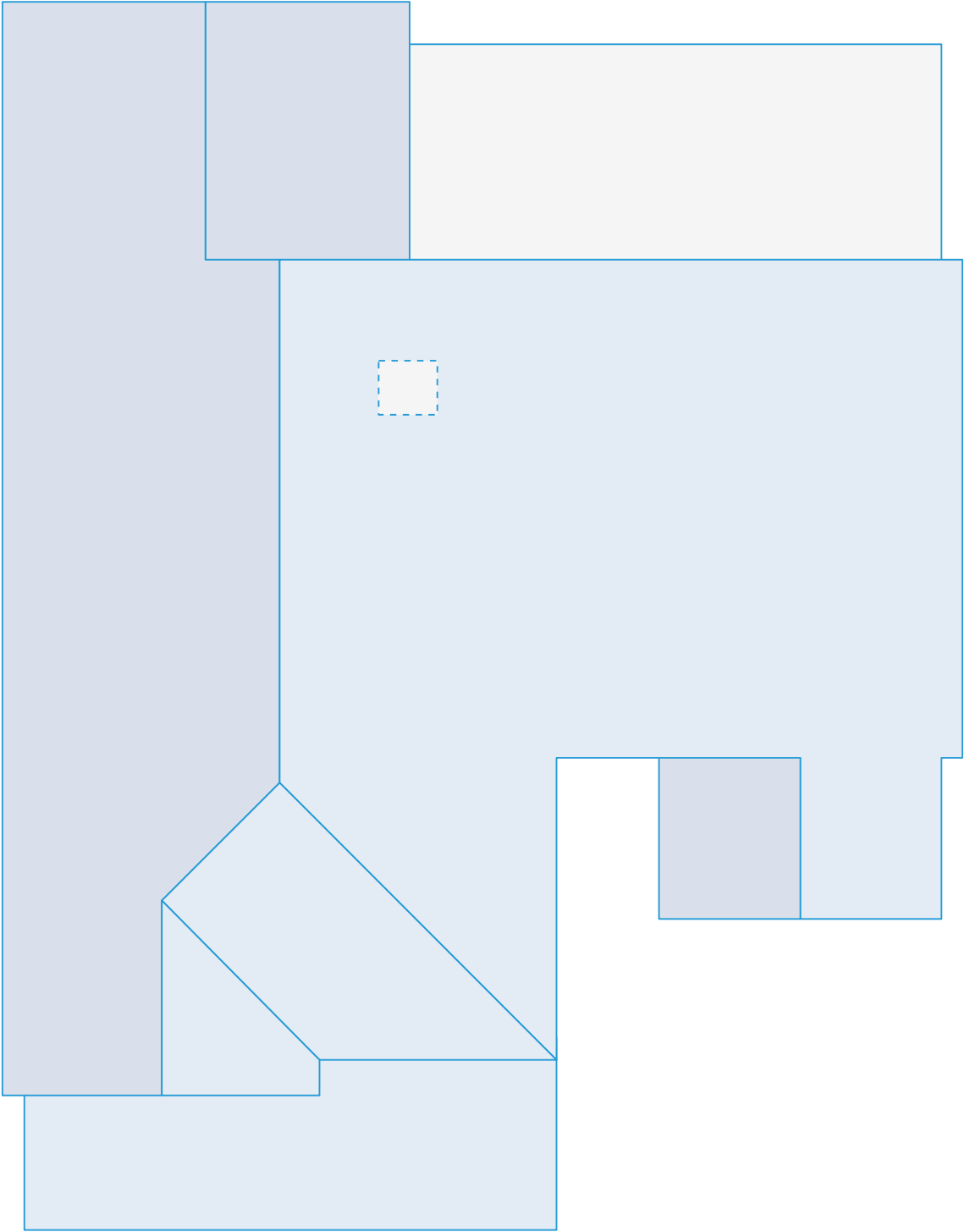
Predominant pitch 5/12



Nearmap Oct 28, 2023

Diagram

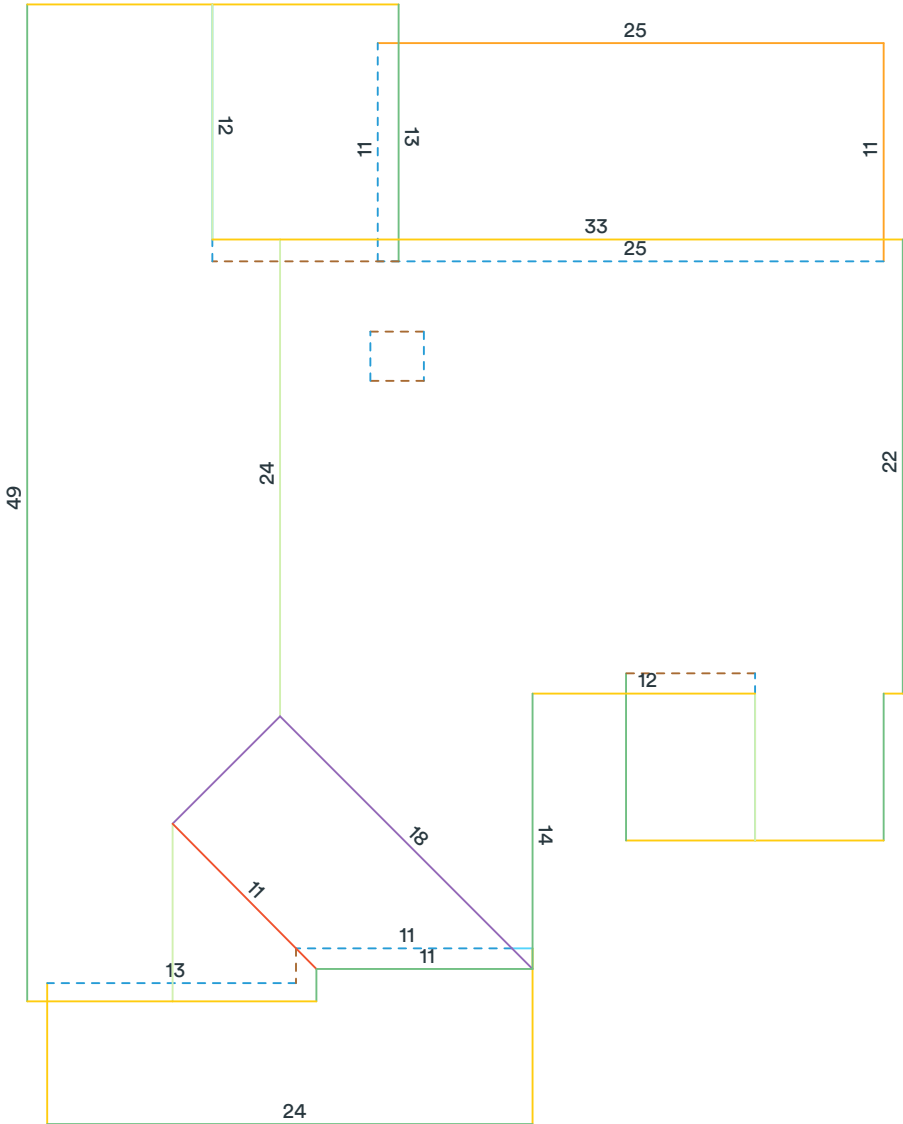
3470 South Barberry Place, Chandler, AZ 85248



Length measurement report

3470 South Barberry Place, Chandler, AZ 85248

- Eaves: 146ft 10in
- Ridges: 50ft 3in
- Step flashing: 23ft 6in
- Unspecified: 19ft 6in
- Valleys: 10ft 4in
- Rakes: 113ft 9in
- Transitions: 0ft 0in
- Hips: 25ft 9in
- Wall flashing: 64ft 5in
- Parapet wall: 35ft 1in



Measurements in diagram are rounded up for display. Some edge lengths may be hidden from diagram to avoid overcrowding.

Area measurement report

3470 South Barberry Place, Chandler, AZ 85248

Total roof area: 2176 sqft

Pitched roof area: 1916 sqft

Flat roof area: 260 sqft

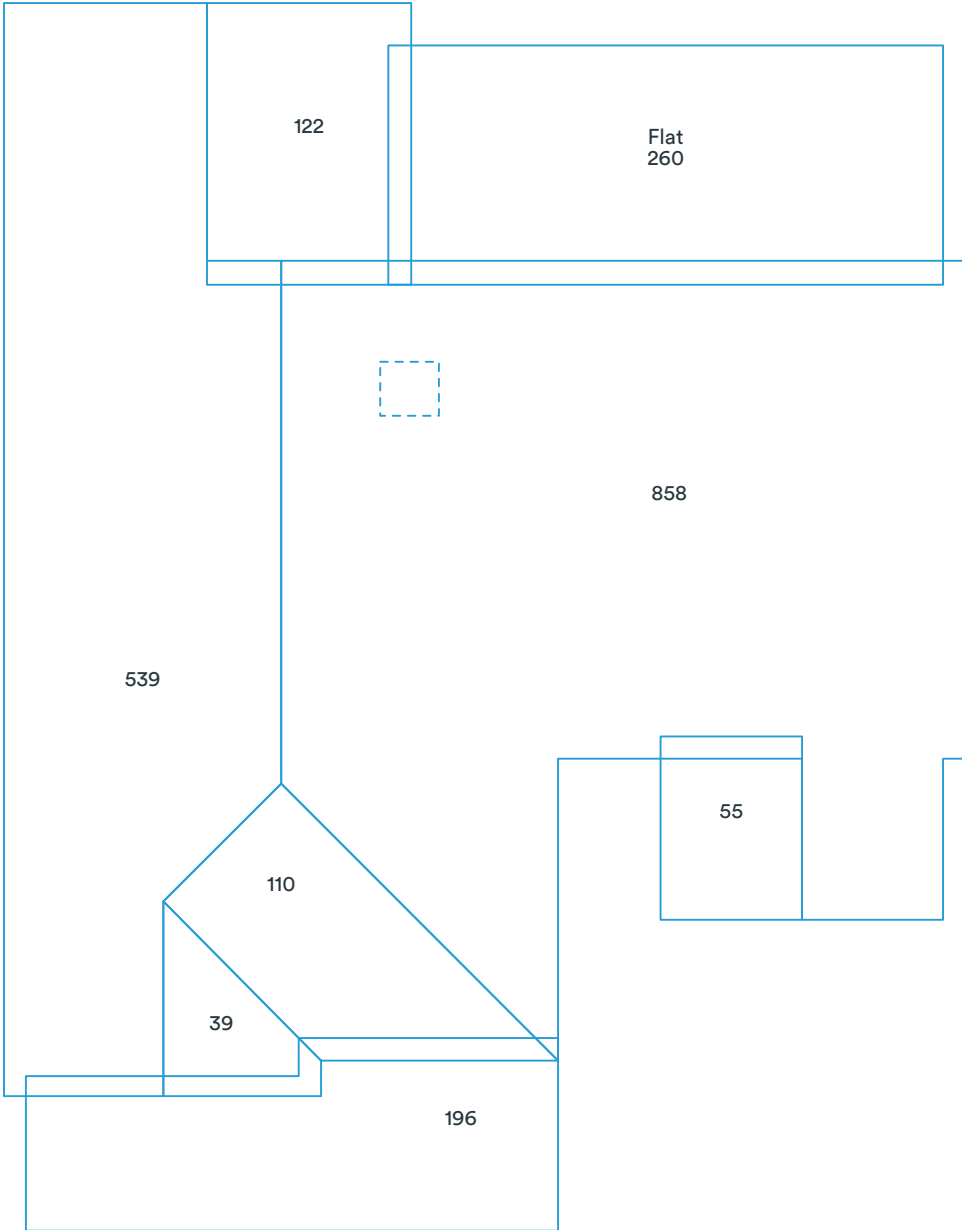
Two story area: 0 sqft

Two layer area: 0 sqft

Predominant pitch: 5/12

Predominant pitch area: 1916 sqft

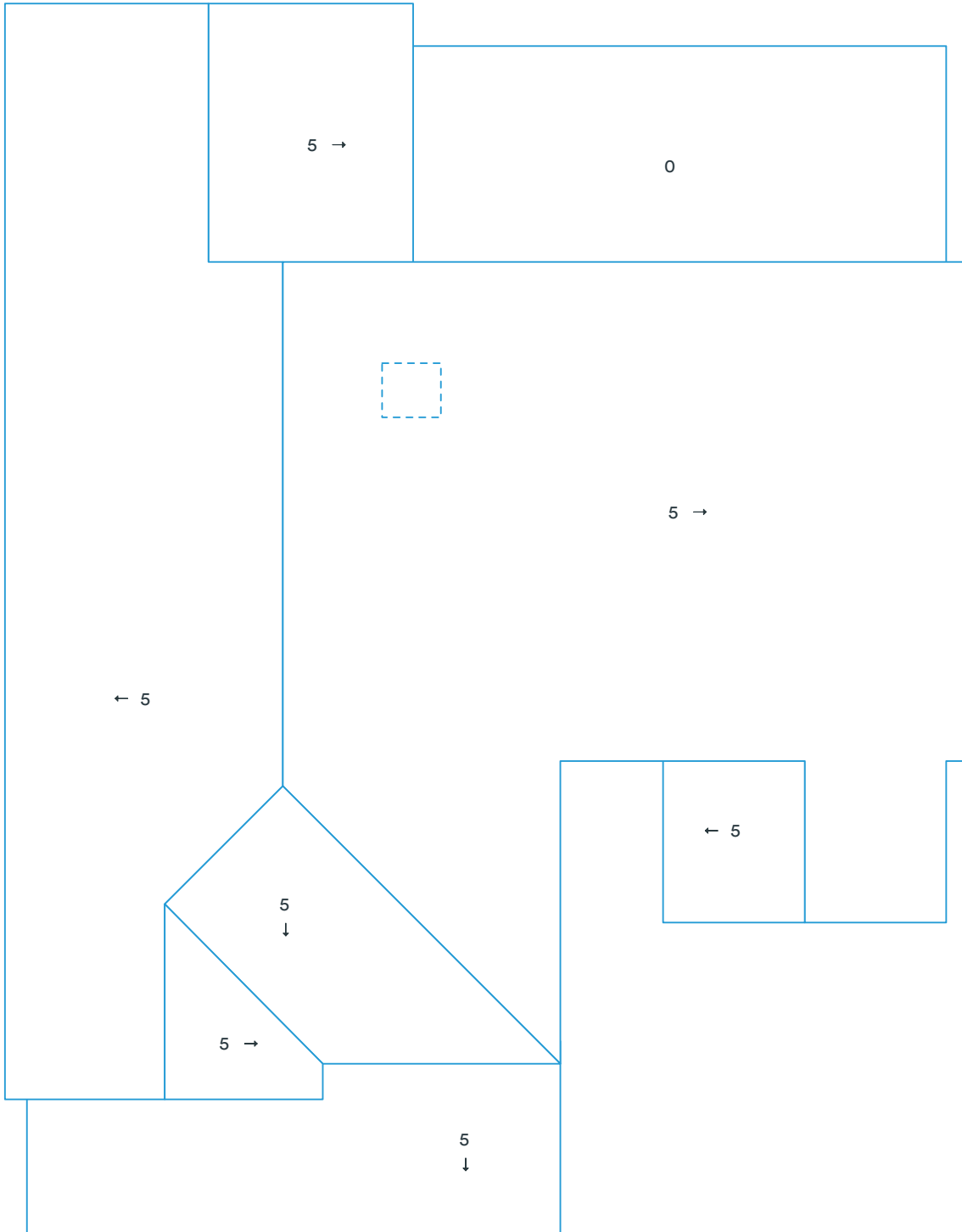
Unspecified pitch area: 0 sqft



Area measurements in diagram are rounded. The totals at the top of the page are the sums of the exact measurements, which are then rounded. Deleted facets (skylights, chimneys, etc.) are designated with a dashed line and are excluded from the calculations.

Pitch & direction measurement report

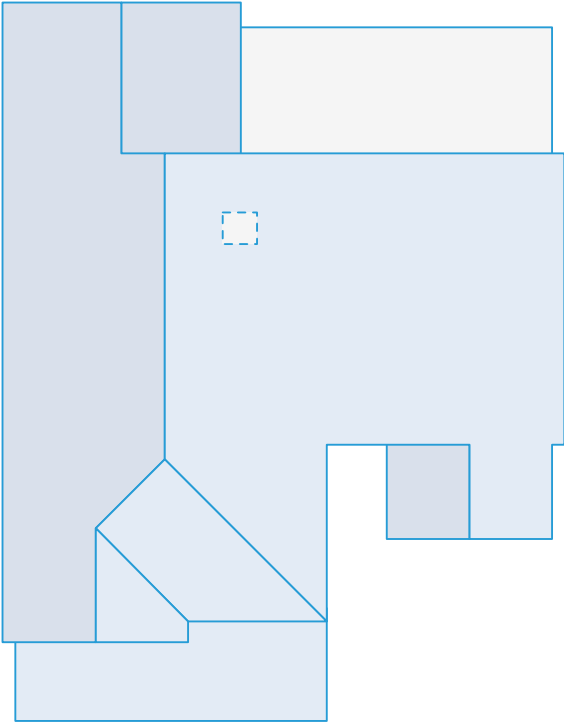
3470 South Barberry Place, Chandler, AZ 85248



Deleted facets are designated with a dashed line and do not have a pitch.

Report summary

3470 South Barberry Place, Chandler, AZ 85248



Measurements

Total roof area	2176 sqft
Total pitched area	1916 sqft
Total flat area	260 sqft
Total roof facets	8 facets
Predominant pitch	5/12
Total eaves	146ft 10in
Total valleys	10ft 4in
Total hips	25ft 9in
Total ridges	50ft 3in
Total rakes	113ft 9in
Total wall flashing	64ft 5in
Total step flashing	23ft 6in
Total transitions	0ft 0in
Total parapet wall	35ft 1in
Total unspecified	19ft 6in
Hips + ridges	75ft 11in
Eaves + rakes	260ft 7in

Pitch	0/12	5/12
--------------	-------------	-------------

Area (sqft)	260	1,916
Squares	2.6	19.2

Recommended

Waste %	0%	10%	12%	15%	17%	20%	22%
Area (sqft)	2,176	2,394	2,437	2,502	2,546	2,611	2,655
Squares	21.8	24.0	24.4	25.1	25.5	26.2	26.6

Recommended waste is based on an asphalt shingle roof with a closed valley system (if applicable). Several other factors are involved in determining which waste percentage to use, including the complexity of the roof and individual roof application style. You will also need to calculate the post-waste quantity of other materials needed (hip and ridge caps, starter shingle, etc.).
 This report was prepared by Roofr. Copyright © 2025 Roofr.com | All rights reserved.

Material calculations

3470 South Barberry Place, Chandler, AZ 85248

Product	Unit	Waste (0%)	Waste (10%)	Waste (15%)	Waste (20%)
Shingle (total sqft)		1,916 sqft	2,108 sqft	2,204 sqft	2,300 sqft
IKO - Cambridge	bundle	58	64	67	70
CertainTeed - Landmark	bundle	59	65	68	71
GAF - Timberline	bundle	59	65	68	71
Owens Corning - Duration	bundle	59	65	68	71
Atlas - Pristine	bundle	59	64	67	70
Starter (eaves + rakes)		261 ft	287 ft	300 ft	313 ft
IKO - Leading Edge Plus	bundle	3	3	3	3
CertainTeed - SwiftStart	bundle	3	3	3	3
GAF - Pro-Start	bundle	3	3	3	3
Owens Corning - Starter Strip	bundle	3	3	3	3
Atlas - Pro-Cut	bundle	2	3	3	3
Ice and Water (eaves + valleys + flashings)		246 ft	270 ft	282 ft	295 ft
IKO - StormShield	roll	4	5	5	5
CertainTeed - WinterGuard	roll	4	5	5	5
GAF - WeatherWatch	roll	4	5	5	5
Owens Corning - WeatherLock	roll	4	4	4	4
Atlas - Weathermaster	roll	4	5	5	5
Synthetic (total sqft; no laps)		1,916 sqft	2,108 sqft	2,204 sqft	2,300 sqft
IKO - Stormtite	roll	2	3	3	3
CertainTeed - RoofRunner	roll	2	3	3	3
GAF - Deck-Armor	roll	2	3	3	3
Owens Corning - RhinoRoof	roll	2	3	3	3
Atlas - Summit	roll	2	3	3	3
Capping (hips + ridges)		76 ft	84 ft	88 ft	92 ft
IKO - Hip and Ridge	bundle	2	3	3	3
CertainTeed - Shadow Ridge	bundle	3	3	3	4
GAF - Seal-A-Ridge	bundle	4	4	4	4
Owens Corning - DecoRidge	bundle	4	5	5	5
Atlas - Pro-Cut H&R	bundle	3	3	3	3
Other					
8' Valley (no laps)	sheet	2	2	2	2
10' Drip Edge (eaves + rakes; no laps)	sheet	27	29	30	32

These calculations are estimates and are not guaranteed. Always double check calculations before ordering materials. Estimates are based off of the total pitched area (i.e., flat area is excluded).